

FAMILY: ARALIACEAEGenera: *Oplopanax*, *Panax***1. PRECONDITIONING:**

METHOD	TIME (h)	TEMP (°C)
Imbibe between moist media	Overnight	20-25

Morphology*Oplopanax**Panax*

Fig 1 External

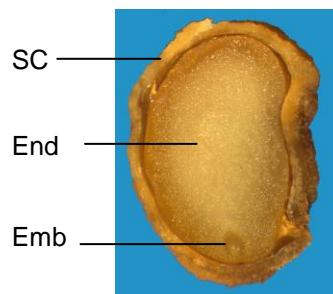
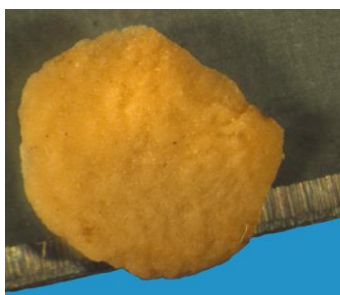


Fig 2 Internal

Note: Embryo is rudimentary.

**2. PREPARATION AND STAINING:**

METHOD	TZ Conc (%)	TIME (h)	TEMP (°C)
1. Cut longitudinally, parallel to the flat surface. Leave enough seed coat intact to keep both halves together.	1.0	overnight	30-35
2. Cut longitudinally, bisecting completely, parallel to the flat surface. Place halves cut side down on blotters soaked with TZ solution.	1.0	overnight	30-35



1

Fig 3 Preparation method

FAMILY: ARALIACEAEGenera: *Oplopanax*, *Panax***Post-staining notes:** Bisect completely. Spread halves apart.**3. EVALUATION:****VIABLE (NORMAL STAINING)**

- entire embryo evenly stained
- nutritive tissue is living and must stain

NON-VIABLE (ABNORMAL OR NO STAINING)

- any essential part of embryo unstained
- nutritive tissue discolored, not firm



Fig 4 Seed stain evaluation