

FAMILY: FUMARIACEAEGenera: *Corydalis*, *Dicentra***1. PRECONDITIONING:**

METHOD	TIME (h)	TEMP (°C)
Imbibe on moist media	overnight	20-25

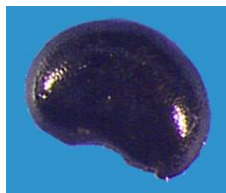
Morphology*Dicentra*

Fig 1 External

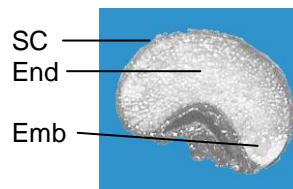


Fig 2 Embryo

Note: Embryo is rudimentary.

**2. PREPARATION AND STAINING:**

METHODS	TZ Conc (%)	TIME (h)	TEMP (°C)
Cut longitudinally (parallel to the face or the narrow dimension) leaving enough tissue intact to keep both halves together	1.0	overnight	30-35

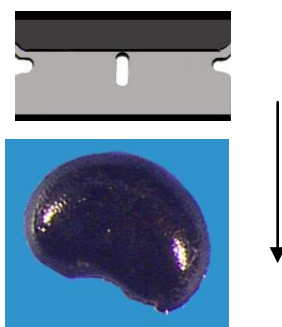


Fig 3 Preparation method

FAMILY: FUMARIACEAEGenera: *Corydalis*, *Dicentra***Post-staining notes:** Spread halves apart to examine embryo.**3. EVALUATION:****VIABLE (NORMAL STAINING)**

- entire embryo evenly stained
- endosperm stained (minor discoloration or unstained areas allowed if away from embryo)

NON-VIABLE (ABNORMAL OR NO STAINING)

- embryo unstained
- endosperm discolored or unstained close to embryo



Fig 4 Seed stain evaluation

Photos: Annette Miller, USDA/ARS NLGRP