

FAMILY: GARRYACEAEGenera: *Garrya***1. PRECONDITIONING:**

METHOD	TIME (h)	TEMP (°C)
Imbibe on moist media	overnight	20-25

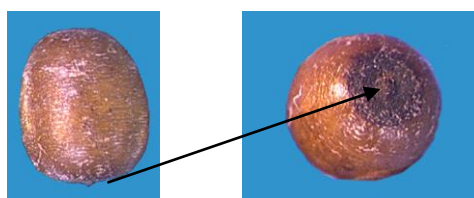
Morphology

Fig 1 External

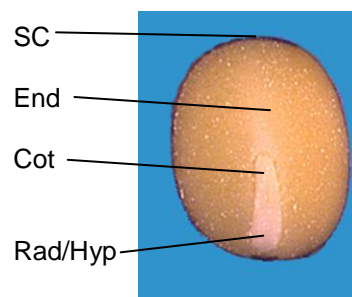


Fig 2 Embryo

**2. PREPARATION AND STAINING:**

METHODS	TZ Conc (%)	TIME (h)	TEMP (°C)
Cut longitudinally leaving enough tissue intact to keep both halves together	1.0	overnight	30-35



longitudinal cut

Fig 3 Preparation method

FAMILY: GARRYACEAEGenera: *Garrya***Post-staining notes:** Bisect and spread halves to examine embryo.**3. EVALUATION:****VIABLE (NORMAL STAINING)**

- entire embryo evenly stained
- endosperm stained (minor discoloration or unstained areas allowed if away from embryo)

NON-VIABLE (ABNORMAL OR NO STAINING)

- any essential part of embryo unstained
- endosperm discolored or unstained close to embryo

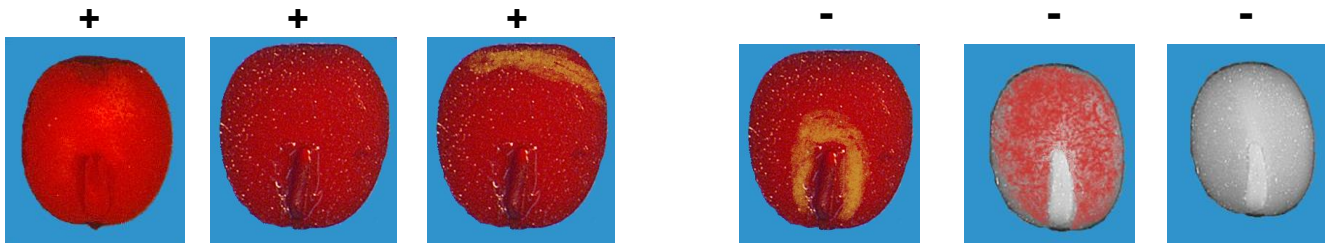


Fig 4 Seed stain evaluation