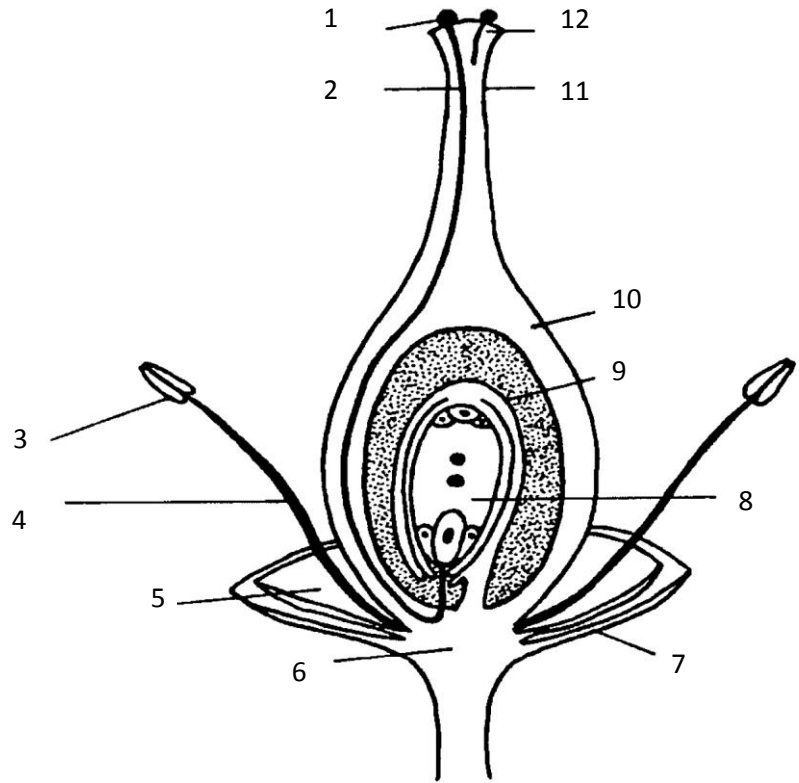


- | | |
|------------|--------------|
| Anther | Pollen Grain |
| Embryo Sac | Pollen Tube |
| Filament | Receptacle |
| Ovary | Sepal |
| Ovule | Stigma |
| Petal | Style |

1. _____
2. _____
3. _____
4. _____
5. _____
6. _____
7. _____
8. _____

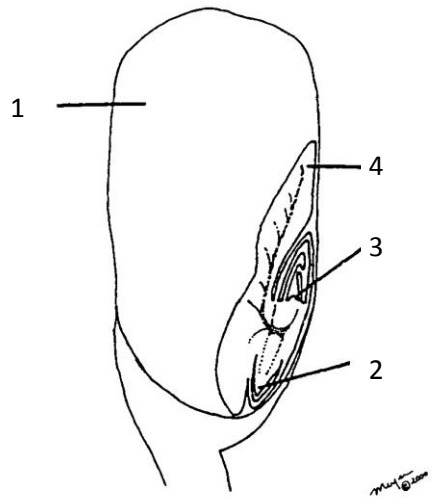


Longitudinal section through a flower.
Sepals and petals cut back for simplicity.

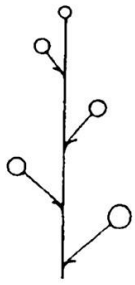
9. _____
10. _____
11. _____
12. _____

1. _____
2. _____
3. _____
4. _____

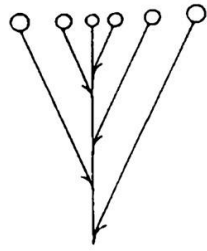
- Endosperm
- Root Apex
- Scutellum
- Shoot Apex



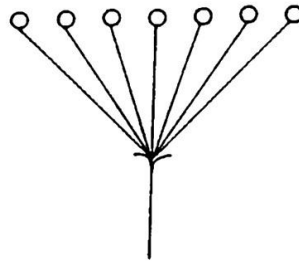
Mature *Zea mays* embryo within the caryopsis.



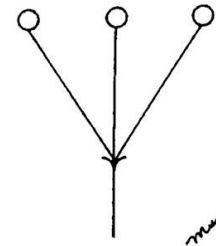
1



2



3



4

Unbranched inflorescences with pedicellate florets, each circle represents a floret.

Compound Corymb

Compound Cyme

Compound Umbel

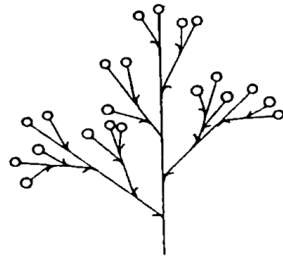
Corymb

Panicle

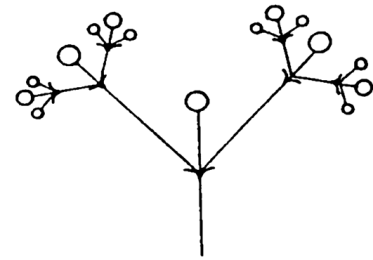
Raceme

Simple Cyme

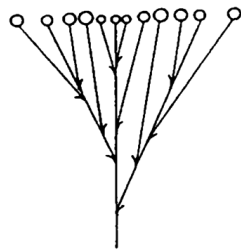
Umble



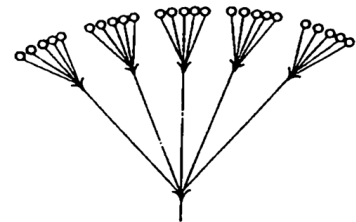
5



6



7



8

Branched inflorescences with pedicellate florets, each circle represents a floret.

1. _____

5. _____

2. _____

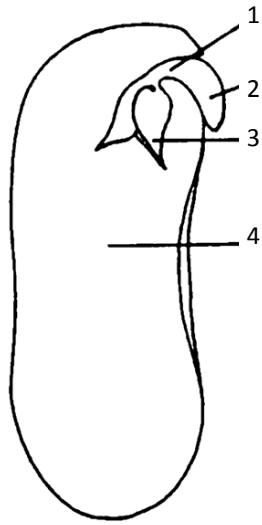
6. _____

3. _____

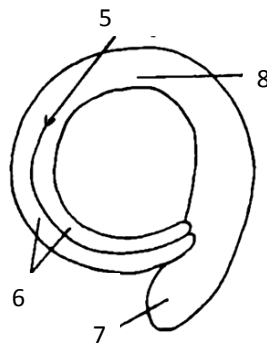
7. _____

4. _____

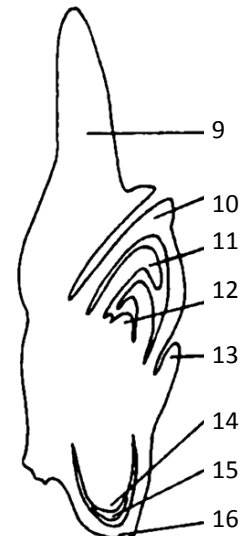
8. _____



Phaseolus vulgaris L.



Capsicum L.



Avena sativa L.

Murphy

Coleoptile	Epiblast	Primary Leaf	Root Cap
Coleorhiza	Hypocotyl	Radicle	Scutellum
Cotyledon	Hypocotyl	Radicle	Shoot Apex
Cotyledons	Leaf	Root Apex	Shoot Apex

1. _____

2. _____

3. _____

4. _____

5. _____

6. _____

7. _____

8. _____

9. _____

10. _____

11. _____

12. _____

13. _____

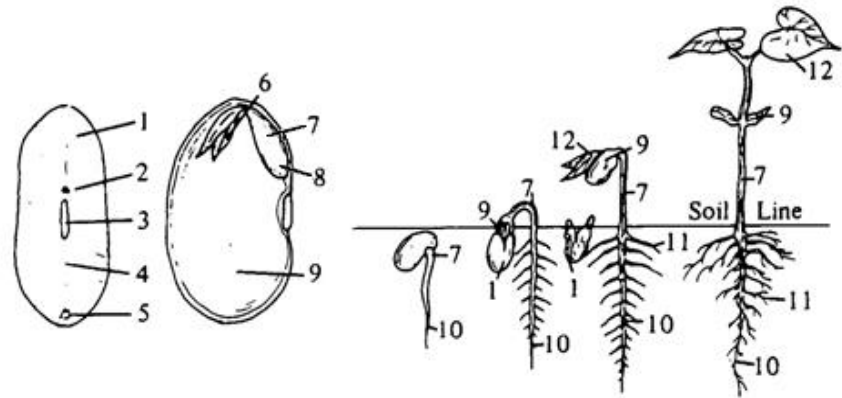
14. _____

15. _____

16. _____

Chalaza
 Coleoptile
 Coleorhiza
 Cotyledon (*scutellum*)

Endosperm
 Hilum
 Hypocotyl
 Leaf
 Micropyle

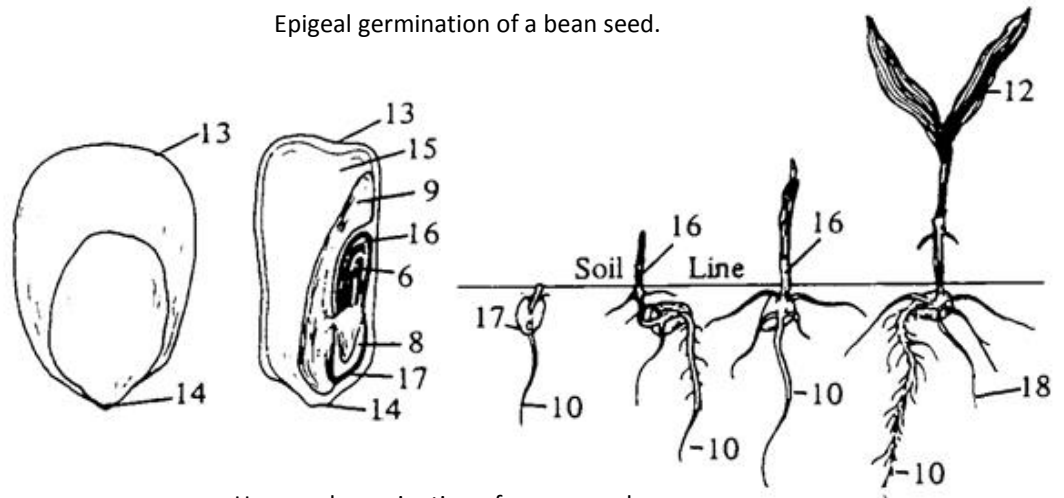


Pericarp

Epigeal germination of a bean seed.

Plumule
 Point of caryopsis attachment
 Primary Root

Radicle
 Raphe
 Secondary root



Seed coat

Hypogeal germination of a corn seed.

Seminal root

1. _____
2. _____
3. _____
4. _____
5. _____
6. _____
7. _____
8. _____
9. _____

10. _____
11. _____
12. _____
13. _____
14. _____
15. _____
16. _____
17. _____
18. _____

